

ALL SIZES AVAILABLE IN WHITE

- 36 -

34.5 × 36

- 48 -

23 × 48  
35 × 48  
46 × 48  
47 × 48  
58 × 48  
70 × 48  
71 × 48

- 60 -

23 × 60  
28 × 60  
30 × 60  
30.5 × 60  
31 × 60  
34 × 60  
34.5 × 60  
35 × 60

36 × 60

39 × 60  
46 × 60  
46.5 × 60  
47 × 60  
48 × 60  
58 × 60  
58.5 × 60  
70 × 60  
70.5 × 60  
71 × 60

- 68 -

25 × 68

- 72 -

23 × 72  
24 × 72  
25 × 72  
26 × 72  
27 × 72  
29 × 72

30 × 72

31 × 72  
34 × 72  
34.5 × 72  
35 × 72  
36 × 72  
43 × 72  
46 × 72  
47 × 72  
52 × 72  
58 × 72  
62 × 72  
63 × 72  
70 × 72  
70.5 × 72  
71 × 72

- 84 -

27 × 84  
35 × 84



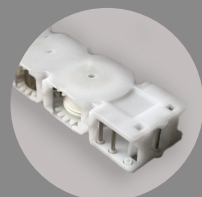
Headrail



Tilt rod



Bottomrail of extruded PVC



Cordless Control Mechanism

# SPECIFICATIONS

» HEADRAIL

Painted roll formed low profile steel headrail 2.24" width x 1.56" height x 0.018" thick.

» HEADRAIL ENDCAPS

Steel box bracket.

» BOTTOMRAIL

Hollow Extruded PVC bottomrail 2.05" width x 0.886" height x 0.09" thick.

» BOTTOMRAIL ENDCAPS

Injection molded plastic.

» WAND

Extruded PVC round shape, 0.394" diameter.

» SLAT

Extruded PVC .021" thickness x 1.97" width.

» TAPE ROLLER SUPPORT

Injection molded plastic with metal roller minimizing cord fray.

» TAPE ROLLER

Injection molded plastic with ladder locking legs.

» TILT ROD

Plated steel, diameter 0.157".

» TILTER

Injection molded plastic clear housing.

» LADDER

Woven polyester ladder 2.126" spacing.

» MOUNTING

BRACKET  
Painted steel with hinged locking front cover.

**PACKAGING**

36" or below: 4 per carton  
37"-47": 3 per carton  
48" wide and larger: 2 per carton