

Specifications

HEADRAIL

Extruded PVC
1.135" width x
.935" height x .070"
thick for widths up
to 68". At 69" and
wider the headrail
measures 1.500"
width x 1.500"
height x .070" thick.

BOTTOMRAIL

Extruded hollow
PVC 1.035" width x
.450" height x .055"
thick.

WAND

Extruded PVC Hex
shape, .315" across
flats. Color coordi-
nated.

SLAT

Extruded PVC
.0157" thick x .970"
width with crown of
.160". 75% opacity.
Flammability test-
ing passed NFPA
701 small scale test.

TAPE ROLLER SUPPORT

Injection molded
plastic with metal
roller minimizing
cord fray.

TAPE ROLLER

Injection molded
plastic with ladder
locking legs.

TILT ROD

Plated steel,
"O" shape
.150" x .125"

CORDLOCK

Injection molded
plastic. Smooth
brass fixed roller.
Knurled floating
brass roller.

TILTER

Injection molded
plastic housing
with steel wand
hook. Gear ratio of
9 to 1. Metal rivet
for added strength.

BOTTOMRAIL ANCHORS

Injection molded
plastic face .500"
diameter, stem
.375" diameter.

BOTTOMRAIL ENDCAPS

Injection molded
plastic.

SLAT CLIP

Injection Molded
Clear Plastic.

CORD

Woven polyester
.070" diameter.

LADDER

Woven polyester
.840" spacing x
1.000" width.

CENTER SUPPORT

Plated steel .040"
thick.

HOLD DOWN BRACKETS

Injection molded
plastic.

TASSEL

Injection molded
plastic - bell
shaped.

MOUNTING BRACKET

Color coordinated
injection molded
plastic. Suitable for
inside or outside
mount.



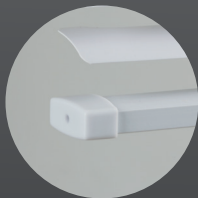
Headrail



*Heavy duty tilter
with metal rivet*



*Cordlock with
brass roller*



*Bottomrail of
extruded hollow
PVC*



*Child-safe tassel
& Safety warning tag*

Customization

Call for Current Pricing

- Blinds measuring 10"-14" in width can be cut up to 1/2".
- Widths 15"-16" can be cut up to 1-1/2".
- Widths 16-1/2"-18" can be cut up to 3-1/2".
- Widths 19" and over can be cut up to 5-1/2".

Packaging

Up to 47" wide: 6 per carton
48" wide and larger: 4 per carton